



For Sale

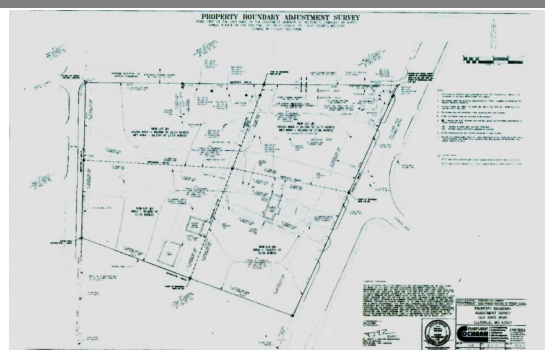
419, 423 & 441 Old State Road Multiple M1 Light Industrial Lots with Signalized Intersection



419 Old State looking West



Pier side Intersection



Plat of Parcels

Site Characteristics

- Lot Sizes 2+ Acre.
- Multiple Lots Available.
- Utilities Available.
- Old State Road Frontage.
- Excellent Visibility!
- Listed at \$7.00/Sq. Ft.
- Ellisville Location!
- Up to 8.73 Acre Available.
- Access off of Krupp Drive.
- Variety of Uses Available.



419 Old State Entry



Site's Arial View

For Additional

Information Contact

Charles St. Onge, CCIM

Direct: (636) 451-2725

E-Mail:

Charlie@stongemanagement.com

Fax: (636) 451-5803

P.O. Box #14

Wildwood, MO 63040

www.stongemanagement.com



Information contained herein has been obtained from the owner of the property or from other reliable sources and is subject to change without notice. The Broker and Owner do not guarantee the accuracy of this information. Owners and Brokers make no representation as to the environmental or other physical conditions of the property and recommend that the Purchaser/Tenant investigate the property to their satisfaction.

Visit our Website

www.stongemanagement.com